



# Don Bosco College

**Co-Ed** ♦ Affiliated to Thiruvalluvar University ♦ Accredited by NAAC with "A" Grade in Cycle 1  
Guezou Nagar, Yelagiri Hills, Tirupathur Dt, Tamil Nadu, India - 635853

+91 7094214511

+91 4179 295 443

dbcyclagiri.edu.in

info@dbcyclagiri.edu.in

## WASTE MANAGEMENT AND ENVIRONMENTAL IMPROVEMENT MEASURES TO ENSURE A SUSTAINABLE GREEN CAMPUS

**Institution:** Don Bosco College (Co-Ed), Yelagiri Hills, Tirupattur District, Tamil Nadu

**Affiliated to:** Thiruvalluvar University

### 1. INTRODUCTION

Don Bosco College (Co-Ed), Yelagiri Hills (DBCY) is deeply committed to environmental sustainability and the creation of a green, clean, and healthy campus ecosystem. Located in the ecologically sensitive Yelagiri Hills, the institution recognizes its responsibility to protect natural resources and promote sustainable practices among students, staff, and the surrounding community.

To achieve this, DBCY has implemented a structured system of waste management and environmental improvement measures aligned with AICTE guidelines. The institution's flagship initiative, the **Waste to Wealth Park (Kuvallam)**, serves as the nucleus for waste segregation, recycling, composting, and value addition, ensuring that waste generated on campus is treated as a resource rather than a burden.

### 2. POLICY FRAMEWORK

DBCY follows clearly defined and documented policies to ensure systematic implementation of green campus initiatives:

- **Waste Reduction Policy:** Emphasizes minimal waste generation through reuse, conscious consumption, and avoidance of single-use materials.
- **Waste Segregation and Recycling Policy:** Mandatory segregation of waste at source into biodegradable, non-biodegradable, recyclable, and e-waste categories.
- **Composting Policy:** Organic and food waste are converted into manure through compost pits and vermicomposting units.
- **Plastic-Free Campus Policy:** Restriction on single-use plastics within the campus.
- **E-Waste Management Policy:** Safe storage and disposal through authorized recyclers.
- **Sanitary Waste Management Policy:** Installation and maintenance of sanitary napkin incinerators in hostels.
- **Water Conservation and Energy Conservation Policies:** Integrated with waste management to ensure holistic environmental sustainability.



  
Principal

Don Bosco College (Co-Ed)  
Guezou Nagar, Yelagiri Hills  
Tirupathur Dist. 635 853.

### 3. OBJECTIVES

The primary objectives of waste management and environmental improvement initiatives at DBCY are:

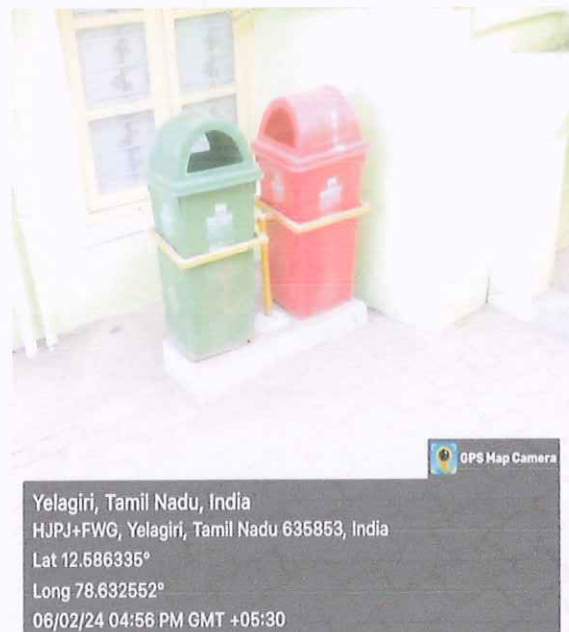
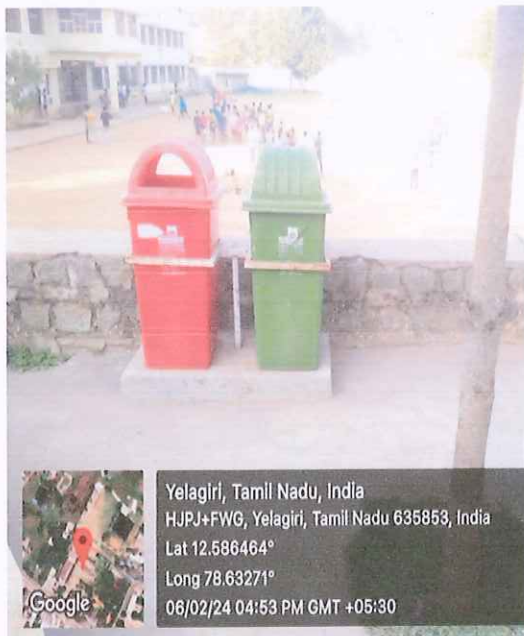
- To reduce waste generation across the campus
- To ensure effective segregation, recycling, and safe disposal of waste
- To promote composting and reuse of organic waste
- To enhance environmental awareness among students and staff
- To support community development through donation and outreach
- To conserve water, energy, and biodiversity
- To ensure compliance with AICTE and statutory environmental norms

### 4. WASTE SEGREGATION AND COLLECTION SYSTEM

DBCY follows a **source-level segregation model**. Color-coded bins are placed at strategic locations such as classrooms, laboratories, offices, hostels, canteen, and common areas:

- **Green Bins:** Biodegradable waste
- **Red Bins:** Non-biodegradable waste
- **Blue Bins:** Food waste
- **Yellow Bins:** E-waste

Cleaning staff collect waste on a daily basis and transport it to a central sorting area linked to the Waste to Wealth Park (Kuvalam). Clear labeling and regular awareness programs ensure proper usage of bins by all stakeholders.



### 5. WASTE PROCESSING AND MANAGEMENT



  
**Principal**  
Don Bosco College (Co-Ed)  
Guezou Nagar, Yelagiri Hills  
Tirupathur Dist. 635 853



## 5.1 BIODEGRADABLE AND FOOD WASTE

Biodegradable and food waste collected from the campus is processed at the **Waste to Wealth Park (Kuvalam)** through:

- Compost pits
- Vermicomposting units

The compost produced is utilized for:

- Herbal Garden
- Thiruvalluvar Thottam (Vegetable Garden)
- Landscaping and tree plantation
- Campus gardens

This practice significantly reduces landfill waste and enhances soil fertility within the campus.



Waste is segregated, stored and sent for recycling in Waste to Wealth Park (Kuvalam)



  
**Principal**  
Don Bosco College (Co-Ed)  
Guezou Nagar, Yelagiri Hills  
Tirupathur Dist. 635 853



Vermicomposting Unit: Biodegradable waste is converted as manure

## 5.2 NON-BIODEGRADABLE WASTE

Non-biodegradable waste is further segregated into recyclable and non-recyclable components:

- **Recyclable waste** (plastic, metal, glass) is sent to authorized recycling agencies.
- **Non-recyclable waste** is disposed of in accordance with local government regulations.

## 6. E-WASTE AND PAPER WASTE MANAGEMENT

### 6.1 E-WASTE MANAGEMENT

Electronic waste such as computers, printers, keyboards, and mobile devices is:

- Stored securely in designated areas
- Labeled with date and category
- Handed over annually to authorized e-waste recyclers


### 6.2 PAPER WASTE MANAGEMENT

A separate waste paper room is maintained on campus. Paper waste is:

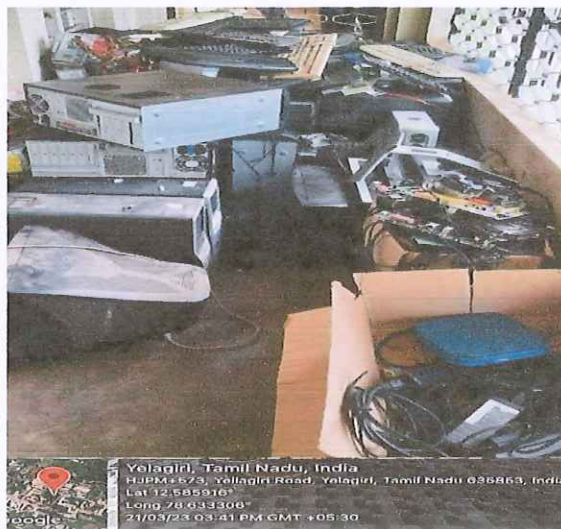
- Collected department-wise
- Bundled and labeled
- Sent for recycling through the Waste to Wealth Park

Additionally, usable paper and office materials are reused or donated whenever possible.



  
**Principal**  
 Don Bosco College (Co-Ed)  
 Guezou Nagar, Yelagiri Hills  
 Tirupathur Dist. 635 853





A separate waste paper room for storing all waste papers, and e-waste is stored separately and sent to authorized recyclers for safe disposal.



Food waste is collected separately and utilized in a pigsty, ensuring effective reuse and reduction of organic waste.

## 7. SANITARY WASTE MANAGEMENT

To ensure safe and hygienic disposal of sanitary waste:

- Sanitary napkin incinerators are installed in girls' hostels
- Incinerators are regularly maintained
- Staff are trained in safe operation and handling

This system ensures environmentally compliant and health-conscious disposal of sanitary waste.



  
Principal  
Don Bosco College (Co-Ed)  
Guezou Nagar, Velagiri Hills  
Tirupathur Dist. 635 853



Napkin incinerators are used for safety Napkin disposal in the campus

## 8. WATER CONSERVATION AND ENVIRONMENTAL IMPROVEMENT MEASURES

DBCY integrates waste management with broader environmental improvement initiatives:

- Rainwater harvesting systems for groundwater recharge
- Reuse of RO outlet water for gardening and landscaping
- Regular water audits and leakage monitoring
- Periodic testing of water quality using pH and TDS meters

Green campus initiatives include:

- Miyawaki Forest
- Biodiversity Park
- Herbal Garden (200+ medicinal plant varieties)
- Organic vegetable gardens
- Eco-park and green amphitheater

These initiatives enhance biodiversity, reduce carbon footprint, and improve campus microclimate.



*bl*  
Principal  
Don Bosco College (Co-Ed)  
Guezou Nagar, Yelagiri Hills  
Tirupathur Dist. 635 853



## 9. ENVIRONMENTAL EDUCATION AND COMMUNITY OUTREACH

Environmental sustainability is embedded in both curriculum and co-curricular activities:

- Hands-on training in vermicomposting, waste segregation, and food waste management
- Awareness programs and workshops on environmental conservation
- Student participation through NSS, Green Hills Club, and eco-initiatives

The college also actively engages with nearby panchayats through:

- Cleanliness drives
- Tree plantation programs
- Sanitation awareness campaigns
- Support for local GPDP initiatives

## 10. MONITORING AND EVALUATION

DBCY has established monitoring mechanisms to ensure effectiveness and continuous improvement:

- Periodic green audits and waste audits
- Regular inspections by campus supervisors
- Review meetings of the Green Campus Committee
- Feedback collection from students, staff, and stakeholders

Corrective actions are taken promptly based on audit findings and feedback.

## 11. CONCLUSION

Through well-defined policies, structured implementation, and active stakeholder participation, Don Bosco College (Co-Ed), Yelagiri Hills has developed a robust and sustainable Green Campus model. The Waste to Wealth Park (Kuvalam) stands as a best practice initiative, transforming waste into valuable resources while promoting environmental responsibility.

These integrated waste management and environmental improvement measures ensure compliance with AICTE requirements and contribute meaningfully to the institution's vision of nurturing socially responsible and environmentally conscious citizens.



  
**Principal**  
Don Bosco College (Co-Ed)  
Guezou Nagar, Yelagiri Hills  
Tirupathur Dist. 635 853